

# Boston Harbor Islands National Park Area

A stylized illustration of a white lighthouse with a black top and a yellow light inside. A bright yellow beam of light shines from the lighthouse across a blue sky. The lighthouse is situated on a green island with rolling hills. The background features a gradient from blue to orange, suggesting a sunset or sunrise over the ocean.

Junior Ranger Program Booklet

Camping Islands

# A Map of Boston Harbor





## What is a Boston Harbor Islands Junior Ranger?

Park Rangers protect the natural and historic treasures of the Boston Harbor Islands National Park Area. As a Junior Ranger, you can help Park Rangers by exploring the islands, learning about their history, and helping to take care of this beautiful natural resource.

### How To Become a Junior Ranger

- If you are . . .
  - 7 or under:* complete 3 or more activities
  - 8 - 12:* complete 5 or more activities
  - 12 or above:* complete 6 or more activities
- If possible, attend a park program such as a tour, hike, performance or activity
- Show your completed booklet to a park staff member, recite the Junior Ranger pledge together and receive a signature

**Practice "Leave No Trace."** You can protect the park by guiding visitors to stay on the trails and off historic walls, by respecting wildlife and by carrying your trash off the island. Remember to always leave what you find, so the next visitor can enjoy the same!



# CAMPING ISLANDS

Lovells Island. Grape Island. Peddocks Island. Bumpkin Island. Each of these places provides a unique opportunity to engage with the natural world and learn about the history of this park.

Once you arrive at your camping destination, check in with a staff person. Ask for information about the island you're on. What is the the history of this place? What makes this island special?

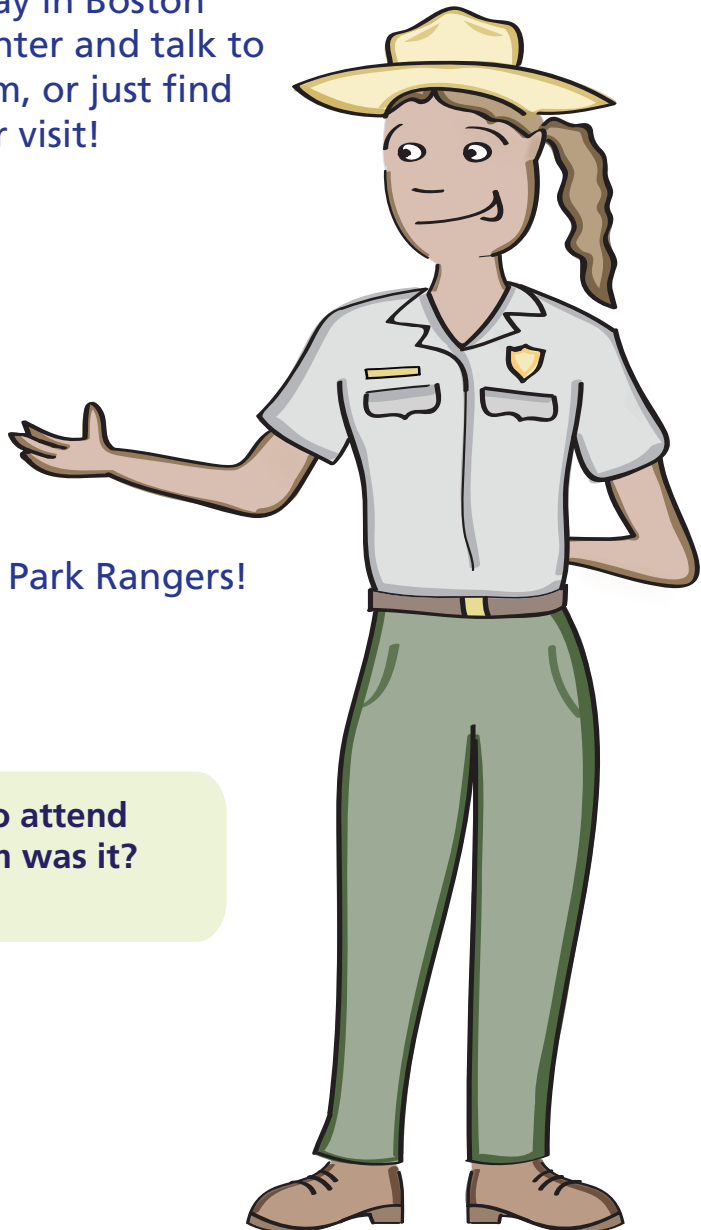
While you're here, take time to explore the coastline, take a hike, dip your feet in the water, or enjoy a campfire on the beach. Whichever island you are on, you'll find there's a lot to discover!

# Conduct a Ranger Interview

As you prepare for an exciting day in Boston Harbor, stop by the Welcome Center and talk to a ranger, participate in a program, or just find out what you can do during your visit!

- What is your name?
- What does a Park Ranger do?
- Ask a question *you* have about Park Rangers!

If you can, find an activity to attend on the island. What program was it?  
What did you do?



# Where Am I?



Each island in Boston Harbor is unique. Find out what makes the island you're on today special!

◆ Which island are you on?

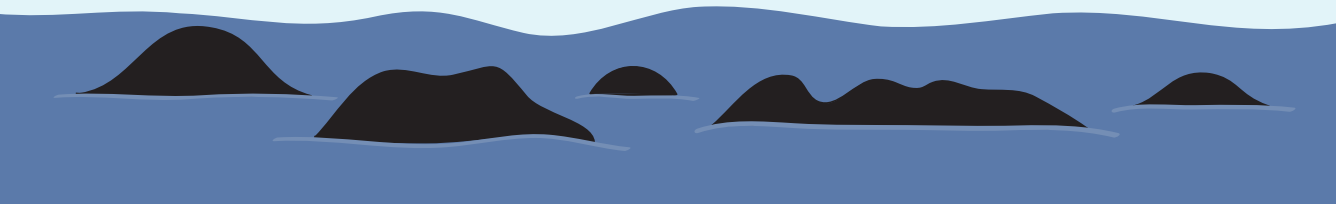
◆ Are there any buildings or foundations here?

How do you think they were used?

Who do you think lived here?

◆ Is there a beach on this island?

◆ What can you learn about the history of this island?

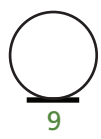
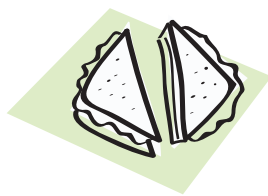
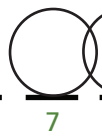
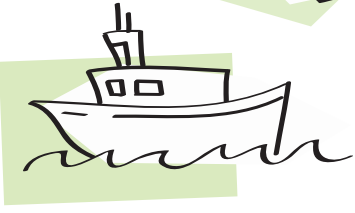
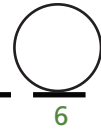
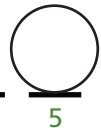
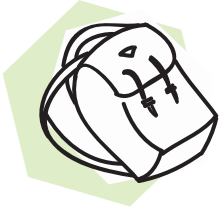
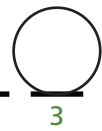
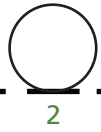
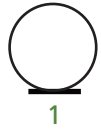


# Leave no Trace



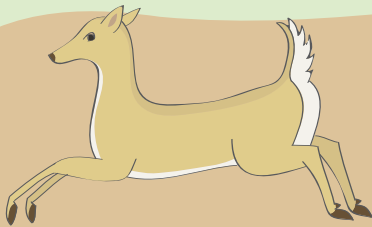
While you're exploring this park, you might not see any trash cans! All of the islands follow the rules of **Leave No Trace**, which means you should make sure to stay on trails, respect wildlife and bring home everything you brought today (and nothing more)! Use the images below to figure out the code of the Boston Harbor Islands.

— 2 R 3 Y 4 N, 5 6 7 8 Y O F 9

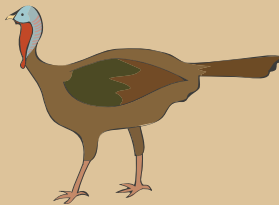


# Track Finder

Animal tracks can tell us a lot about who is living around us, where they are and what they're doing. Connect each footprint to the island inhabitant it belongs to!



White-tailed Deer



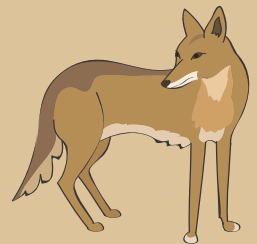
Wild Turkey



Human



Raccoon

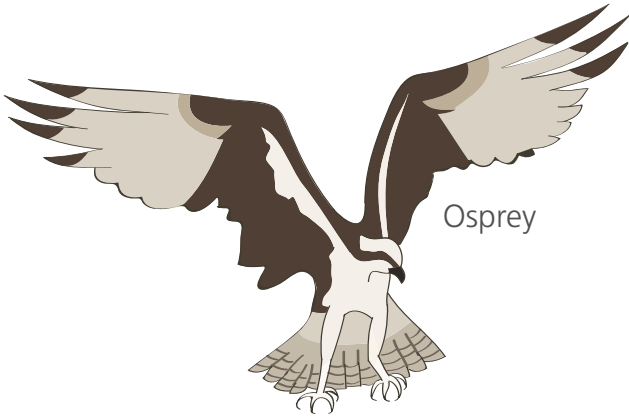


Coyote



# Food Web

As in any ecosystem, living things here depend on one another to survive. Among the plants and animals below, who do you think is eating who, or what? Draw arrows to create an island food web!



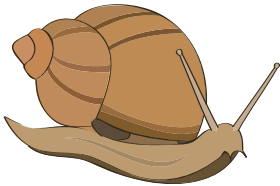
Osprey



Flower



Bee



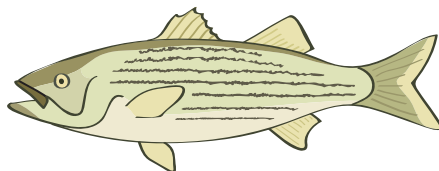
Snail



Crab



Milkweed



Striped Bass



Monarch Butterfly

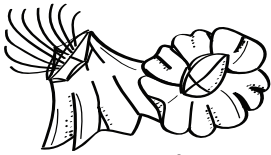
# Night Sky

Throughout time and across many cultures, people have told stories using patterns in the stars called **constellations**. Using this map of the summer sky, connect the stars to create your own constellations with a story.



# Beach Hunt

Using this field guide, take a closer look at who lives below the waterline and find out how crowded the beach really is! Circle what you find.



Barnacle



Hermit Crab



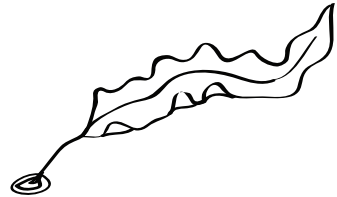
Sea Urchin



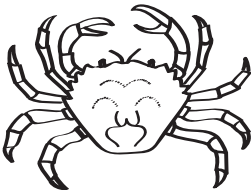
Irish Moss



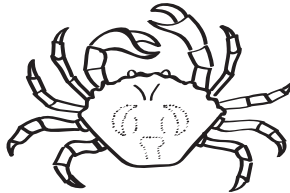
Blue Mussel



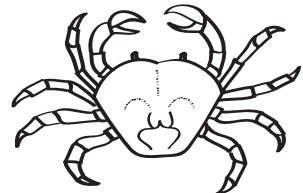
Kelp



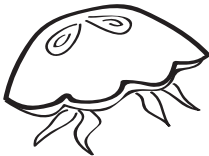
Green Crab



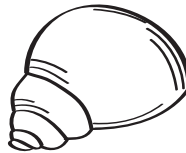
Rock Crab



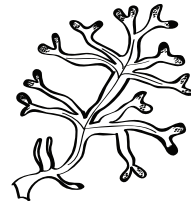
Shore Crab



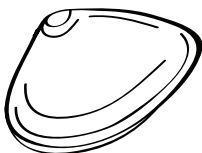
Moon Jelly



Periwinkle



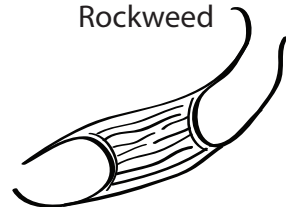
Rockweed



Soft Shell Clam



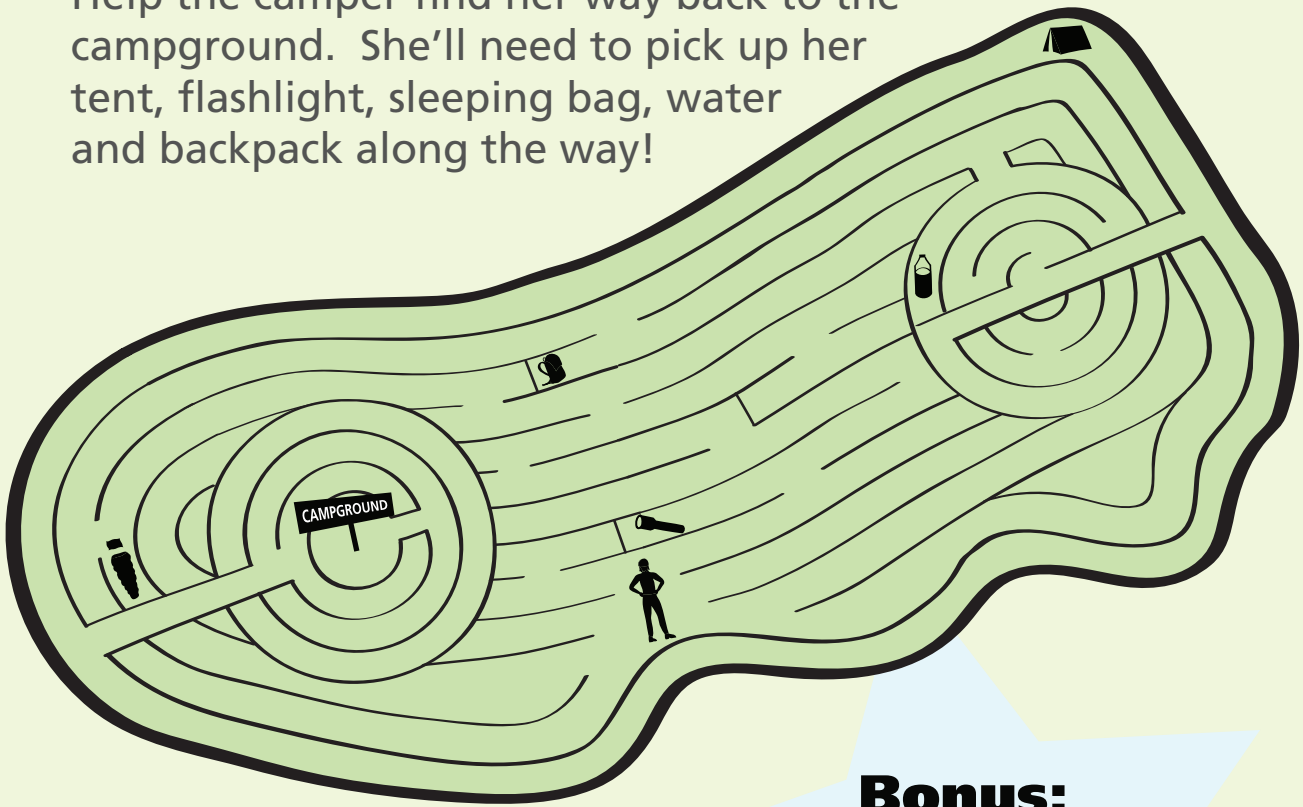
Razor Clam



Skate Egg Case

# Get Lost!

Help the camper find her way back to the campground. She'll need to pick up her tent, flashlight, sleeping bag, water and backpack along the way!



## **Bonus:**

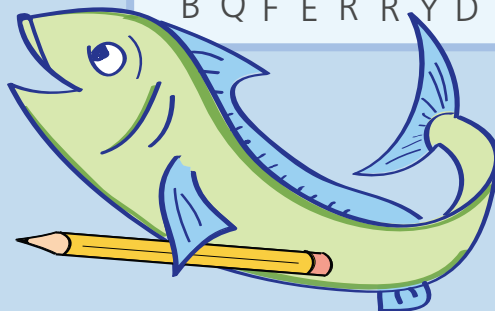
Find out the actual size of the island you're on. How far do you think you've walked today?

# Word Search!

How many of the following words can you find in the word search below?

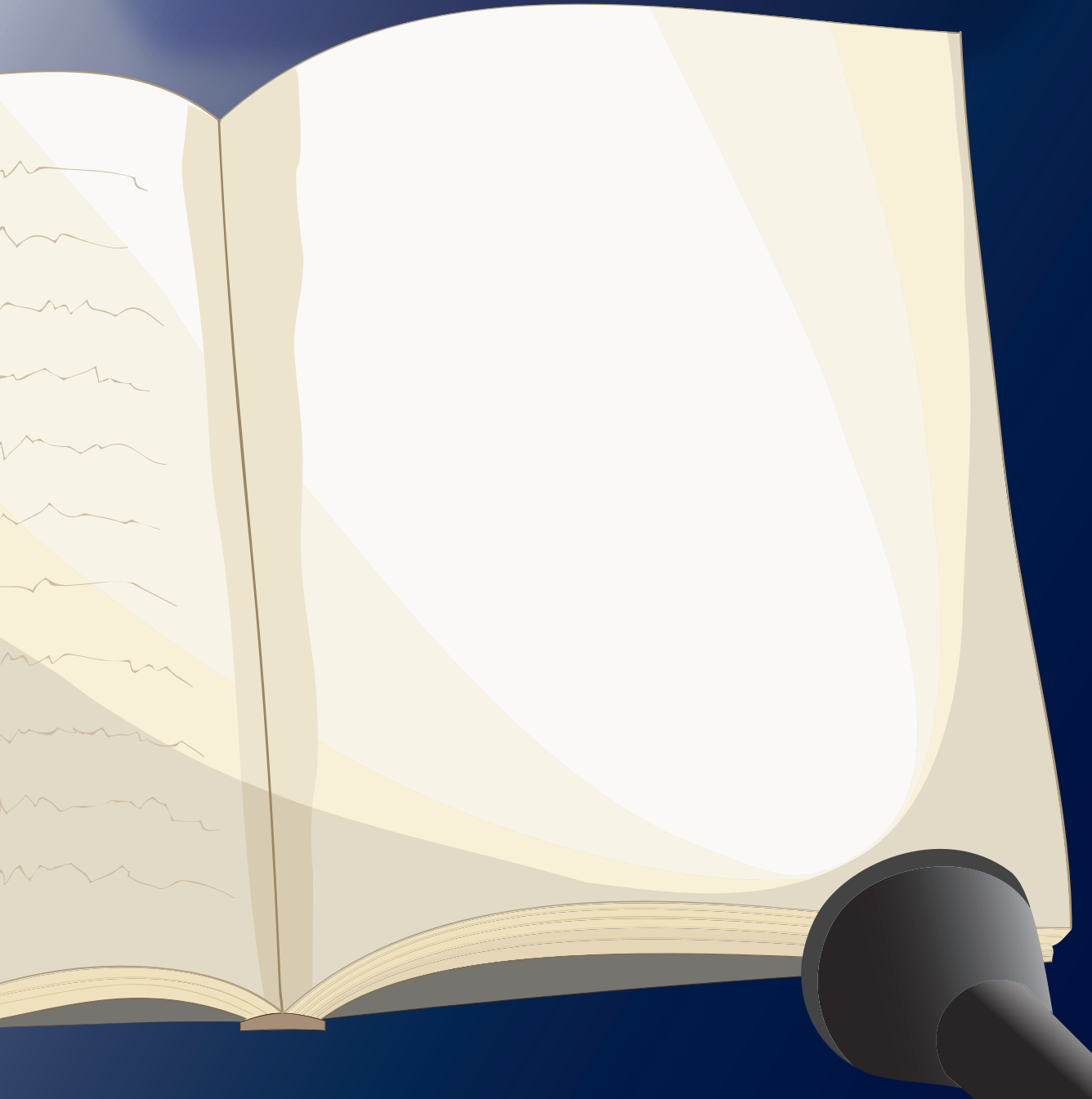
1. Tent
2. Tide Pool
3. Stars
4. Jr. Rangers
5. Kayaks
6. Ferry
7. Camp Fire
8. Sleeping Bag
9. Backpack
10. Flashlight
11. Trail
12. Hiking
13. Islands
14. Wildlife

V	I	D	Q	R	U	S	Y	A	G	F	C	O	Z	T	S
T	E	N	T	F	L	A	R	I	X	D	P	T	E	J	L
K	A	P	E	T	I	D	E	P	O	O	L	C	V	U	E
E	J	Y	W	Y	F	P	B	A	C	K	P	A	C	K	E
Q	F	E	I	C	R	D	X	N	Y	A	T	M	L	M	P
V	L	F	L	D	A	S	T	A	R	S	W	P	S	G	I
K	A	C	D	Z	O	I	D	J	H	R	G	F	V	W	N
Y	S	G	L	A	E	X	C	K	U	M	P	I	A	P	G
N	H	B	I	R	J	R	R	A	N	G	E	R	S	F	B
P	L	X	F	L	S	D	Q	Y	U	I	S	E	O	E	A
K	I	M	E	D	I	S	L	A	N	D	S	O	Z	B	G
I	G	V	J	B	O	H	I	K	I	N	G	K	F	R	N
S	H	O	I	M	H	S	N	S	R	L	W	C	U	K	T
H	T	R	A	I	L	G	O	E	Y	A	T	Q	M	F	W
B	Q	F	E	R	R	Y	D	T	I	F	O	E	D	P	R



# Camp Journal

This is a space to let your imagination roam! You can draw what's around you, write about your travels, or plan a new adventure.





**As a  
Junior Ranger,  
I pledge to:**

- Continue learning about the Boston Harbor Islands
- Actively explore and protect this park and other special places
  - Share what I learn with my family and friends

---

Junior Ranger's Signature

---

Park Official's Signature



- |                       |                        |                       |                    |
|-----------------------|------------------------|-----------------------|--------------------|
| Bumpkin Island        | Green Island           | Nixes Mate            | Sheep Island       |
| Button Island         | Hangman Island         | Nut Island            | Slate Island       |
| Calf Island           | Langlee Island         | Outer Brewster Island | Snake Island       |
| Deer Island           | Little Brewster Island | Peddocks Island       | Spectacle Island   |
| Gallops Island        | Little Calf Island     | Raccoon Island        | Thompson Island    |
| Georges Island        | Long Island            | Ragged Island         | Webb Memorial Park |
| Grape Island          | Lovells Island         | Rainsford Island      | Worlds End         |
| The Graves            | Middle Brewster Island | Sarah Island          |                    |
| Great Brewster Island | Moon Island            | Shag Rocks            |                    |

Can't turn in this booklet in person? Make a copy of your completed booklet and send it with your name and address to:

Boston Harbor Islands Junior Ranger Program  
 15 State St. Suite 1100  
 Boston, MA 02109

Activities created by Elisabeth Colby

Designed and illustrated by Liz Cook



UNION  
 PARK  
 PRESS

Union Park Press, proud supporters of the Boston Harbor Islands National Park and publishers of *Discovering the Boston Harbor Islands: A Guide to the City's Hidden Shores*.